

## Configuring your browser for “pass through” or “integrated” security

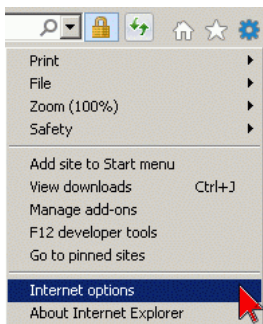
Want to stop having to enter your user name and password against Microsoft systems like Sharepoint and SQL SSRS Reporting?

Since you are already logged into your work computer, your browser can be configured to automatically authenticate you. No passwords are exchanged (an authentication token is passed behind the scenes).

**Note:** This requires is that you are logging into your computer into one of the following domains: SOM/, CAMPUS/, UCSFMC/

### Instructions for Microsoft Internet Explorer and Chrome (may require help from your PC support person)

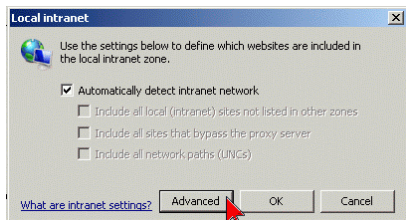
1. Within IE click the settings icon (the “gear”) in the upper right corner or use the menus and then click “internet options”



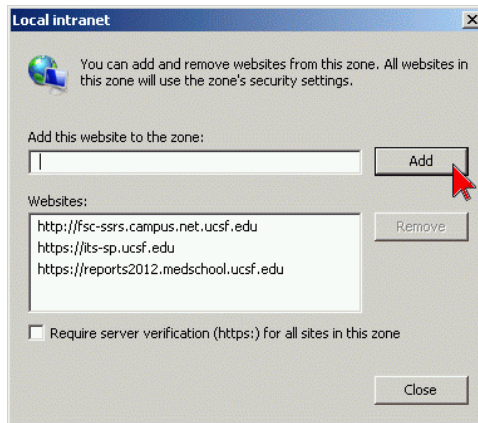
2. - click the security tab  
- click local intranet  
- then click the “sites” button.



3. - click the “advanced button” to see the screen on the right  
- enter in the following three urls click the add button for each  
<https://its-sp.ucsf.edu>  
<https://reports2012.medschool.ucsf.edu>  
<http://fsc-ssrs.campus.net.ucsf.edu>



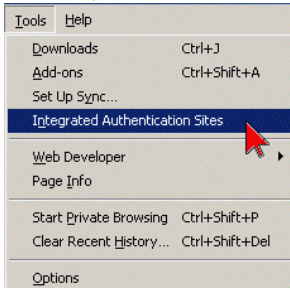
1. Click close, ok, or apply as needed to save your new settings



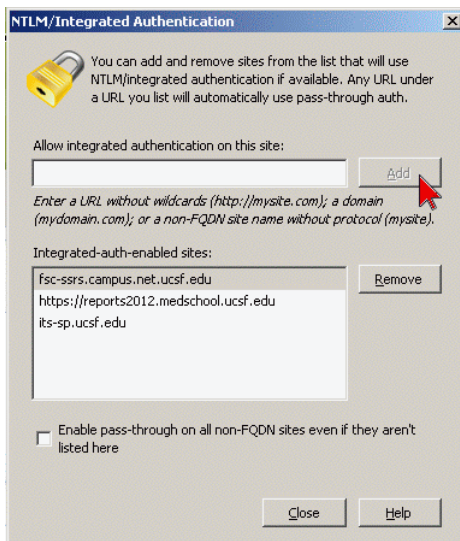
## Instructions for FireFox (may require help from your PC support person)

Within FireFox,

- download the integrated security add-in from here  
<https://addons.mozilla.org/en-US/firefox/addon/integrated-auth-for-firefox/>
- Once installed, use the tools menu and click integrated authentication sites



- Enter in the following three urls hitting the "add" button for each item  
<https://its-sp.ucsf.edu>  
<https://reports2012.medschool.ucsf.edu>  
<http://fsc-ssrs.campus.net.ucsf.edu>



- Click close, ok, or apply as needed to save your new settings

---

Both configurations can be applied globally over a set of well managed workstations.  
Your domain and workstation technical folks will be able to tell you if this is possible within your organization.

---

